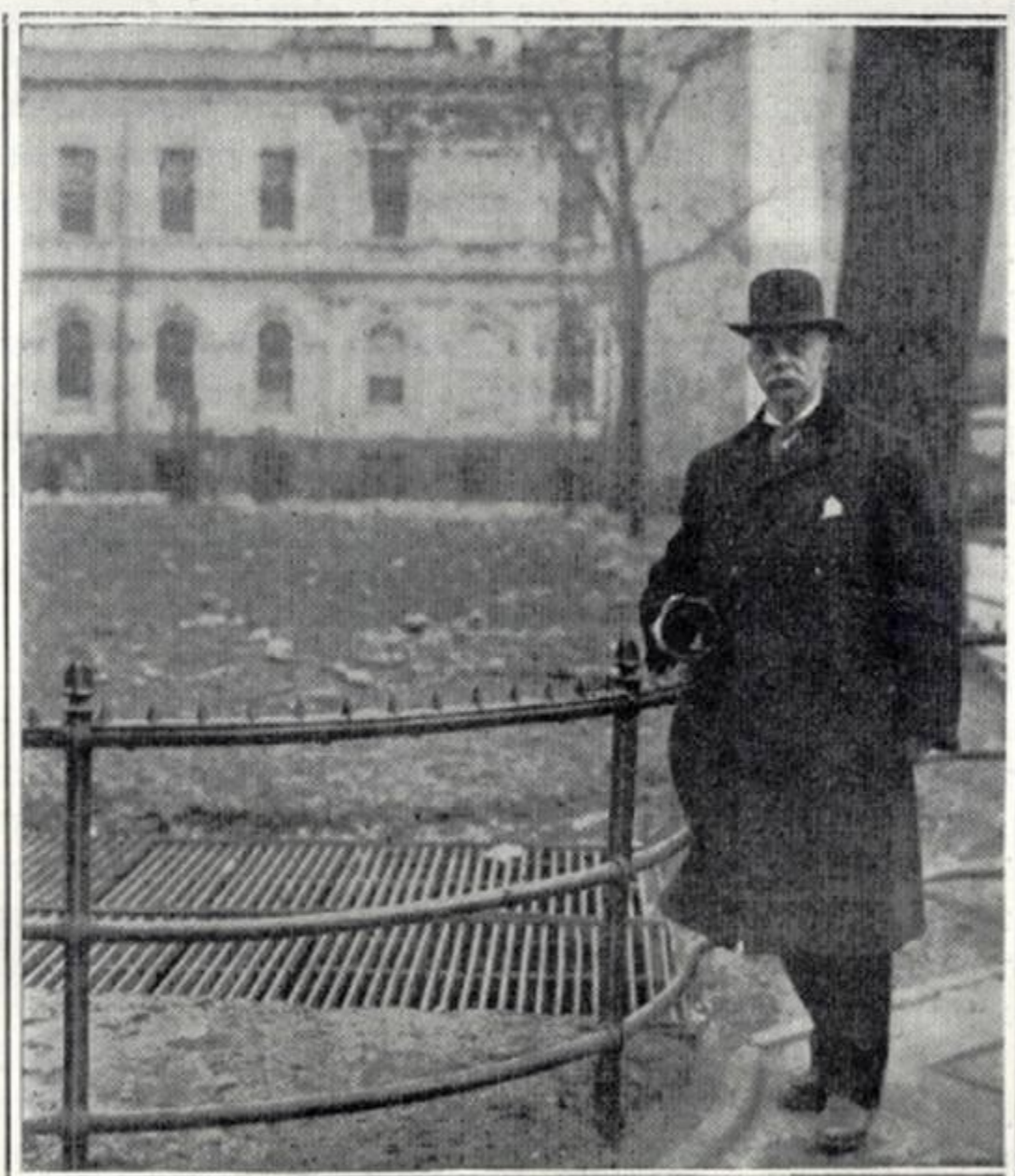


The picture shows the ruins of the old car. The opening at the top is the beginning of a bricked ventilating conduit passing from Murray Street and terminating in the grated opening shown above.



**The grating in City Hall Park, covering a ventilating opening leading to the Scientific American tunnel.**

**In the picture Mr. F. C. Beach, son of A. E. Beach, is shown, holding a small model of the shield with which the tunnel was dug.**